

LAKERIDGE GREENS

AT PIPER'S GLEN PUD - POD 'D'

SITUATE IN SECTIONS 3 & 4, TOWNSHIP 46 SOUTH, RANGE 42 EAST, PALM BEACH COUNTY, FLORIDA,
A PORTION OF WHICH IS PART OF BLOCK 64 OF PALM BEACH FARMS COMPANY PLAT NO. 3,
AS RECORDED IN PLAT BOOK 2, ON PAGES 45 THROUGH 54, INCLUSIVE OF THE PUBLIC RECORDS
OF SAID PALM BEACH COUNTY.

FEBRUARY, 1995

SHEET 7 OF 10

0298015

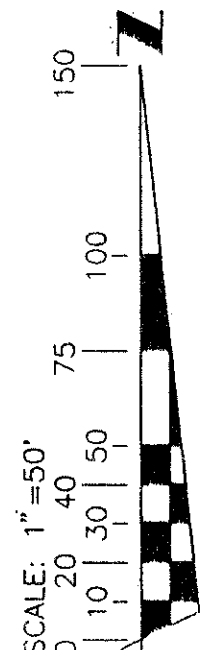
RET. 80-212D
ALLOC. #0002 184
5/3/3/K

STATE OF FLORIDA
COUNTY OF PALM BEACH } SS

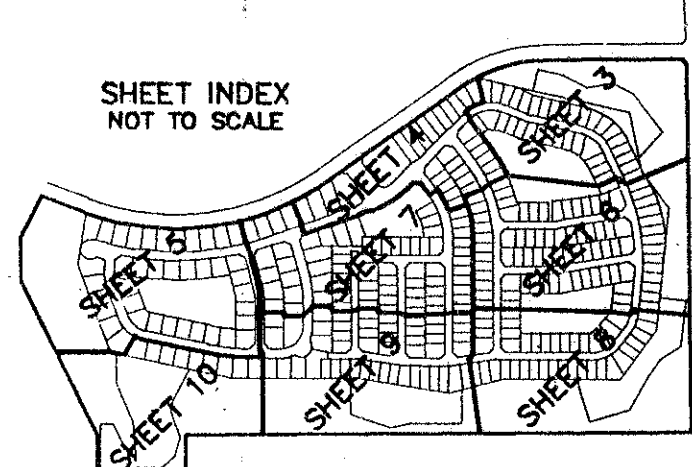
This plot filed for record at _____
this _____ day of _____
19____ and duly recorded in Plat
Book _____ on page _____

DOROTHY H. WILKEN, CLERK of the
Circuit Court.

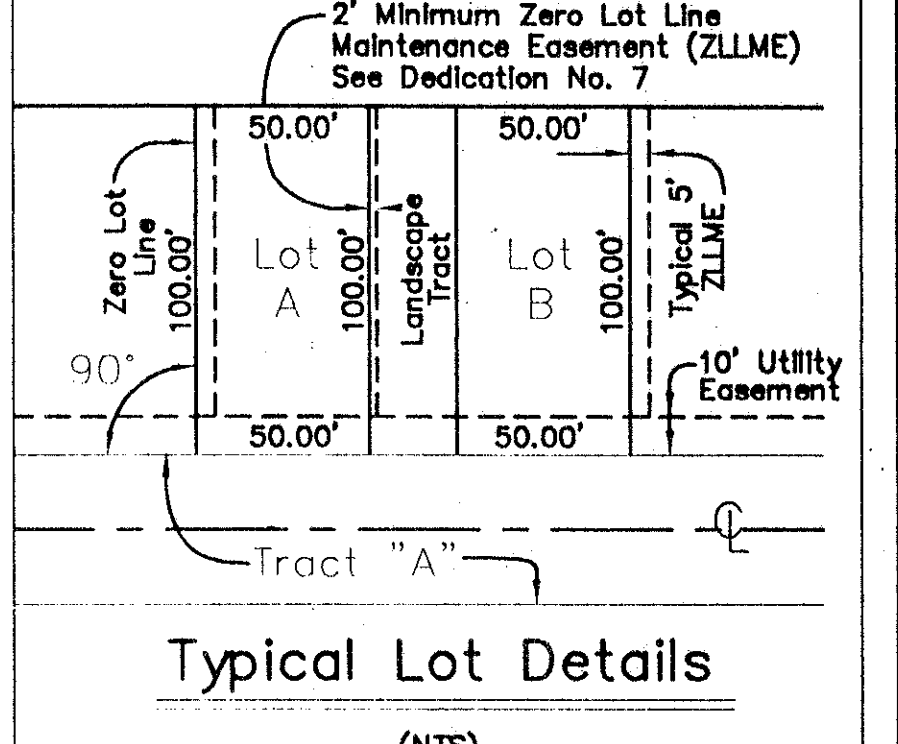
By: _____ D.C.



All distances are ground.
Scale factor = 1.000285.
Ground distance X scale factor = Grid Distance.
See sheet 3 for complete coordinate information.



- Map Legend :**
- ⊙ = Permanent Control Point
 - = Permanent Reference Monument
 - = Centerline
 - Δ = Central Angle (Delta)
 - CM = Concrete Monument
 - DE = Drainage Easement
 - DT = Driveway Tract
 - F = Feet
 - L = Arc Length
 - LAE = Limited Access Easement
 - LME = Lake Maintenance Easement
 - LMAE = Lake Maintenance Access Easement
 - ORB = Official Record Book
 - PB = Plat Book
 - PC = Point of Curvature
 - PCP = Permanent Reference Point
 - Pg = Page
 - PRM = Permanent Reference Monument
 - R = Radius Length
 - Typ = Typical
 - UE = Utility Easement
 - ZLME = Zero Lot Line Maintenance Easement



Atlantic - Caribbean Mapping, Inc.
PROFESSIONAL LAND SURVEYORS AND MAPPERS
357 Liana Drive
West Palm Beach, Florida 33415
(407) 687-5898 - Fax (407) 471-8752

Dwg No. 94085PL SHEET 7 OF 10

SUBDIVISION - Lakeridge Greens
BOOK 74 PAGE 184
FLOOD ZONE B FLOOD MAP # 200A
QUAD # 26/51 ZONING RT
SE 80-212 ZIP CODE 33437
PUD NAME Pipers Glen P.U.D.

TAZ-457

LAKERIDGE GREENS
0298-015